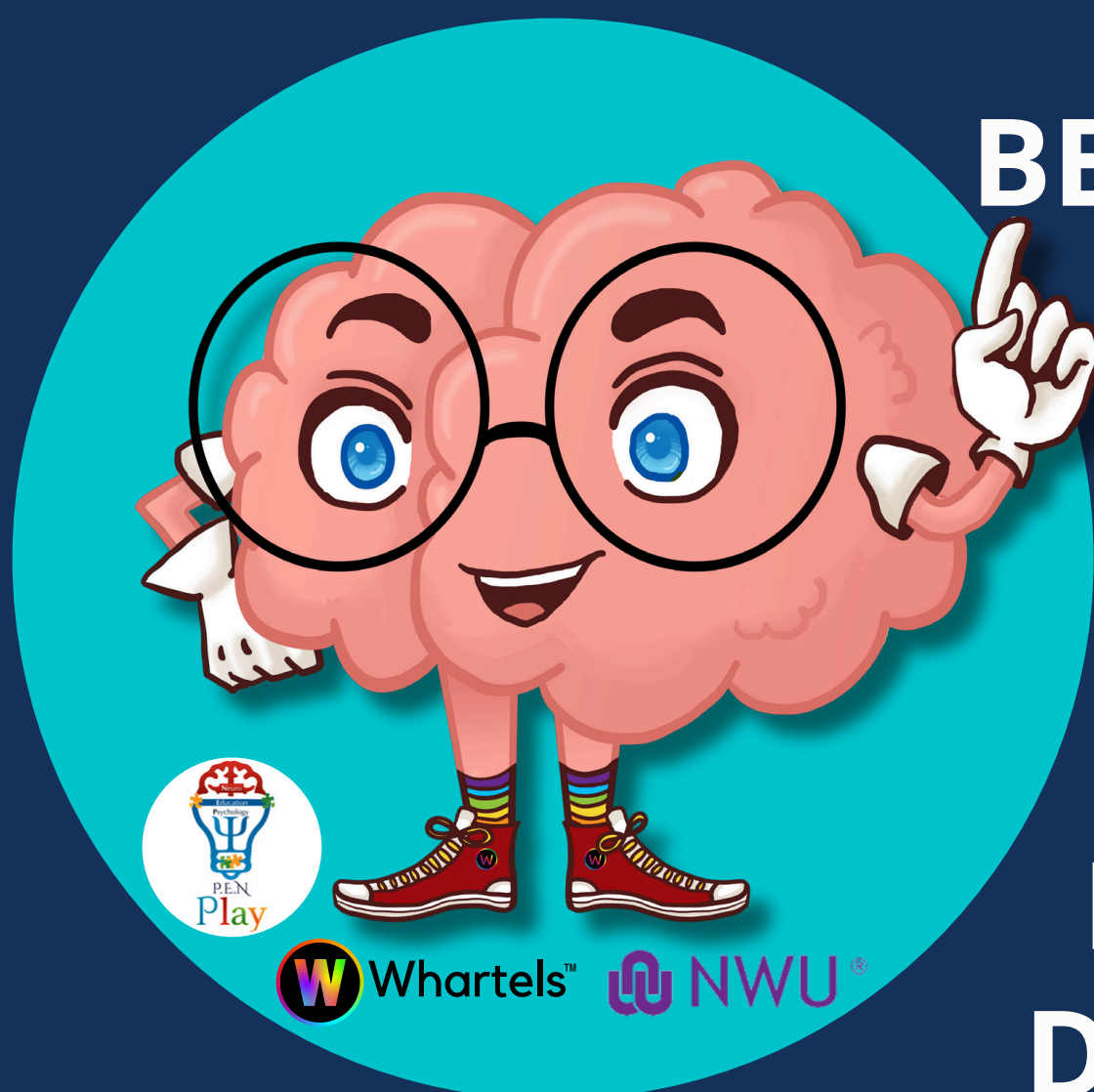


Almal het 'n wiskunde storie!
Ons glo dat elke kind 'n blink toekoms verdien!

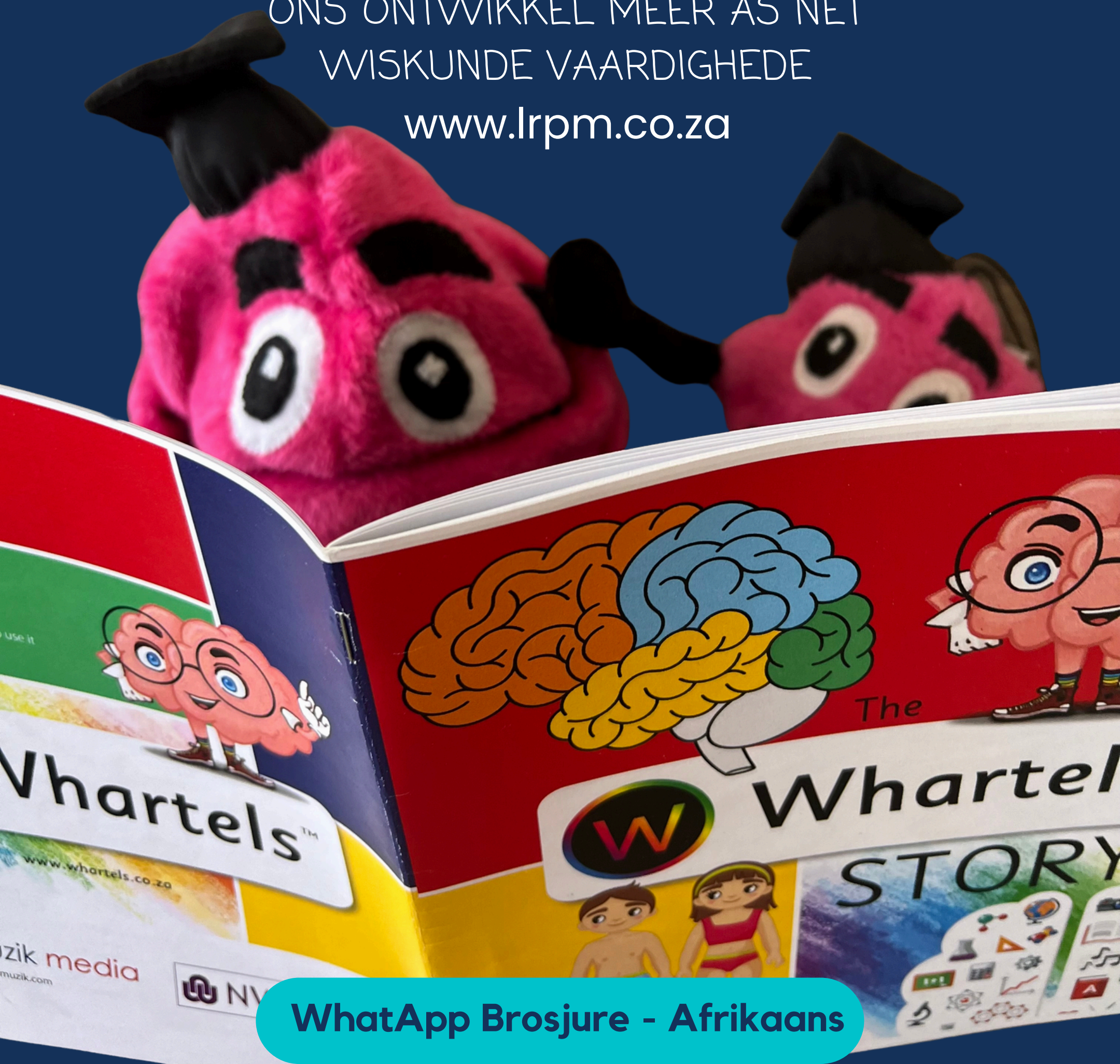
"Let's Really! Play Maths"



**'N PRET
BENADERING
WAAR
KINDERS
WISKUNDE
GENIET EN
BEMEESTER
DEUR SPEEL!**

ONS ONTWIKKEL MEER AS NET
WISKUNDE VAARDIGHEDDE

www.lrpm.co.za



WhatsApp Brosjure - Afrikaans

Almal het 'n wiskunde storie!
Ons glo dat elke kind 'n blink toekoms verdien!

"Let's Really! Play Maths"



'n Pret benadering om wiskunde te bemeester!

KINDERS MOET WISKUNDE AANRAAK

- Perseptuele stel
- Getalstel
- Vorm/Meetkunde stel
- Woordeskatstel

KINDERS LEER DEUR SPEEL

- Breinraaisel en Whartels-storie
- Bordspel
- Kuns en kunsvlyt
- Poppe

Ons Whartels™-stel bestaan uit 'n unieke reeks produkte wat die Whartels™-kaarte insluit:

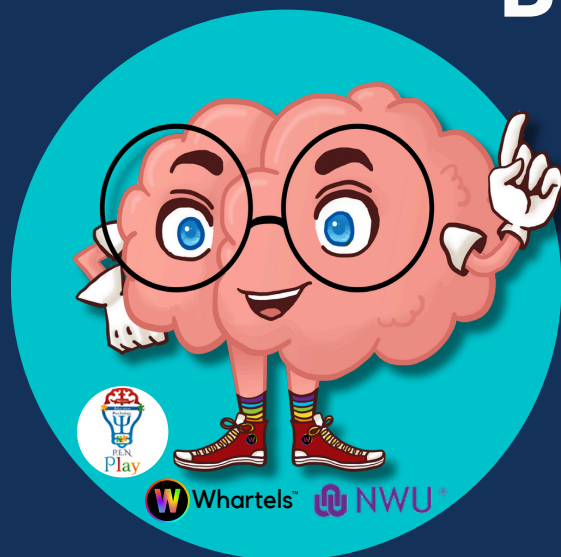
Studie-Oriëntasie, Emosionele Intelligensie, Hanteringstrategieë, Impulsbeheer, Metakognitiewe vaardighede, Betroubaarheid en Kaarte wat speel met hoe wiskunde in die alledaagse lewe gebruik word. Die wiskundekurrikulum word deur die volgende kaarte gedek – getalle, vorms, geld, dubbel en half, berekeninge, woordeskat en kunsvlyt en pret. Die Whartels™ sluit al die manipulasies (opvoedkundige speelgoed) in wat nodig is vir die kind om wiskunde te leer. Dit fokus ook op perseptuele ontwikkeling en sluit 'n gedetailleerde inligtingsgids oor perseptuele ontwikkeling en die gebruik van die spesifiek ontwerpte apparaat vir die spelfasiliteerder in.

VOORTLOOPENDE NAVORSING

Die Whartels™-inhoud is ontwikkel na aanleiding van omvattende navorsing wat fokus op voorspellers van wiskundeprestasie, neuropsigologie, remediërende onderwys, wiskunde-onderrig en -leer, vroeë kinderontwikkeling, ontwikkelingsielkunde, neuro-ontwikkelingsafwykings, sowel as terapeutiese intervensies vir kinders.



ONS ONTWIKKEL MEER AS NET WISKUNDE VAARDIGHEDE



'N PRET BENADERING WAAR KINDERS WISKUNDE GENIET EN BEMEESTER DEUR SPEEL!

www.lrpm.co.za

Ons glo elke kind verdien om wiskunde te geniet en 'n blink toekoms te hê!

VOORSPELLERS VAN WISKUNDE PRESTASIE

Navorsingsbevindinge toon dat emosionele intelligensie, studie-oriëntasie in wiskunde en wiskunde-veerkragtigheid voorspellers van wiskundeprestasie is.

Whartels™ beoog om EMOSIONELE EN SOSIALE INTELLIGENSIE TE ONTWIK:

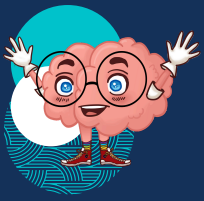
Die aktiwiteite in die Whartels™-program stel die spelfasiliteerder in staat om die emosionele en sosiale intelligensie van kinders te ontwikkel deur:

- Studie-oriëntasie in wiskunde – skep 'n positiewe studiemilieu
- Probleemoplossingsgedrag in wiskunde
- Meta-kognitiewe denke
- Emosionele intelligensie
- Veerkragtigheid
- Perseptuele ontwikkeling
- Hanteringstrategieë

Ons glo kinders moet van kleins af 'n liefde vir wiskunde ontwikkel:

Die waarde van die Maths Whartels™-program lê daarin dat kinders van kleins af met wiskunde kan speel en 'n liefde vir wiskunde ontwikkel deur wiskundekonsepte op 'n prettige manier aan te leer.

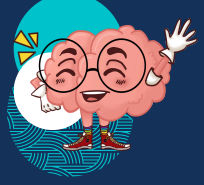
DIE OPLOSSING



Pret omgewing waar ons spel gebruik om wiskundekonsepte, emosionele intelligensie en metakognisie te ontwikkel deur middel van speltherapietegniese soos handpoppe, bordspeletjies en tegnologie.



Unieke, bewysgebaseerde inhoud (WHARTELS™) ontwikkel deur Dr Petro Erasmus, 'n Opvoedkundige Sielkundige - navorser in samewerking met die Noordwes-Universiteit.



'n Innoverende en holistiese benadering wat die krag van spel en storievertelling gebruik om die wêreld van wiskunde te ontdek.



KINDERS ONTWIKKEL OP VERSKILLENDE PASSIES

DIFFERENSIASIE:

Die Maths Whartels™-bordspeletjie, tesame met die gedetailleerde handleiding, help speelfasiliteerders in uitdagende situasies om wiskunde vir alle kinders toeganklik te maak, om nie net die kind te help wat ekstra bystand in wiskunde nodig nie, maar ook om leer vir die begaafde kind te versnel.

OMVATTENDE SPEELSTRATEGIE:

Voorsien speelfasiliteerders van 'n omvattende stel instruksies en speeltoerusting met duidelike riglyne. Speelfasiliteerders volg 'n stap-vir-stap benadering om wiskundekonsepte bekend te stel die kind deur speel.

KURRIKULUM:

Die inhoud van Maths Whartels™ is nie net aan een kurrikulum gekoppel nie. Spesifieke kurrikulumuitkomstes gebaseer op byvoorbeeld die KABV-kurrikulum word in die program aangedui.

Ouers BEMAGTIG:

MAANDELIKSE WEBINARE VIR OUERS:

Terugvoer aan ouers sal meer wees gefokus, soos die maandelikse webinars sal gee duidelike riglyne en strategieë vir ouers om hul kind mee te help wiskunde by die huis.



Dit maak dit makliker vir Play-fasiliteerders om Maths Whartels as deel van hul Let's Really Play Maths-sessies te gebruik.

MET DIE BYSTAND VAN DIE REMEDIËLE TERAPEUT EN OPVOEDKUNDIGE SIELKUNDE KAN DIE VOLGENDE VIR ELKE KIND SAAMGESTEL WORD:

Alle verslae van ander professionele persone (Opvoedkundige Sielkundige, Spraak- en Arbeidsterapeute) sowel as onderwyservraelyste kan aan die Opvoedkundige Sielkundige gestuur word en die bevindinge en aanbevelings kan die geïndividualiseerde speelprogram vir die kind rig.

Everyone has a math story
We believe that every child deserves a bright future!

"Let's Really! Play Maths"



A fun approach to master maths!

CHILDREN MUST TOUCH MATHS

- Perceptual set
- Number set
- Shape/Geometry set
- Vocabulary set

CHILDREN LEARN THROUGH PLAY

- Brain puzzle and Whartels story
- Board game
- Arts and -crafts
- Puppets

Our Whartels™ set consists of a unique range of products which includes the Whartels™ cards:

Study Orientation, Emotional Intelligence, Coping Strategies, Impulse Control, Metacognitive skills, Resilience and Cards that play with how maths is used in every day living. The maths curriculum is covered by the following cards – numbers, shapes, money, double and half, calculations, vocabulary and crafts and fun. The Whartels™ includes all the manipulatives (educational toys) needed for the child to learn maths by touching. It also focuses on perceptual development and includes a detailed information guide on perceptual development and the use of the specifically designed apparatus for the play facilitator.

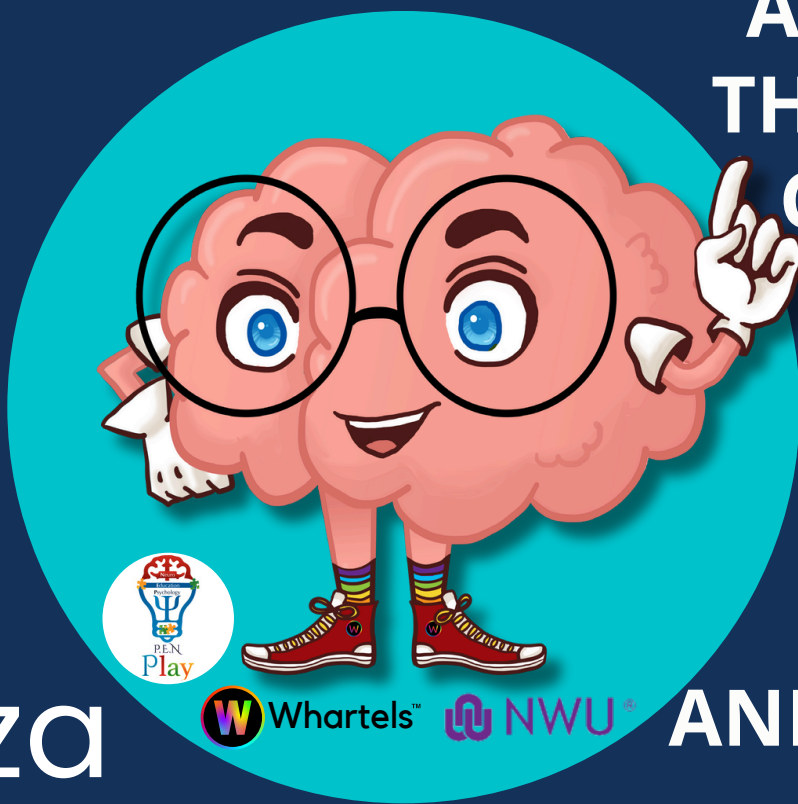
ONGOING RESEARCH

The Whartels™ content was developed following comprehensive research that focuses on predictors of maths achievement, neuropsychology, remedial education, maths teaching and learning, early childhood development, developmental psychology, neurodevelopmental disorders, as well as therapeutic interventions for children. Research will be conducted continually.



WE DEVELOP MORE
THAN JUST MATHS
SKILLS

www.lrpm.co.za



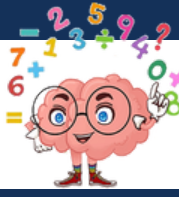
A FUN
APPROACH
THAT HELPS
CHILDREN
LEARN,
PLAY,
ENJOY
AND MASTER

MATHS



Whartels™

NWU



"Let's Really! Play Maths"

We believe every child deserves to enjoy maths and have a bright future!



PREDICTORS OF MATHS ACHIEVEMENT

Research findings show that emotional intelligence, study orientation in maths and maths resilience are predictors of maths achievement.

Whartels™ aims to DEVELOP EMOTIONAL AND SOCIAL INTELLIGENCE:

The activities in the Whartels™ programme enable the play facilitator to develop the emotional and social intelligence of children through:

- Study orientation in maths – creating a positive study milieu
- Problem-solving behaviour in mathematics
- Meta-cognitive thinking
- Emotional intelligence
- Resilience
- Perceptual development
- Coping strategies

We believe children must develop a love for mathematics from a very young age:

ng maths concepts in a fun way.™

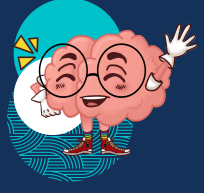
THE SOLUTION



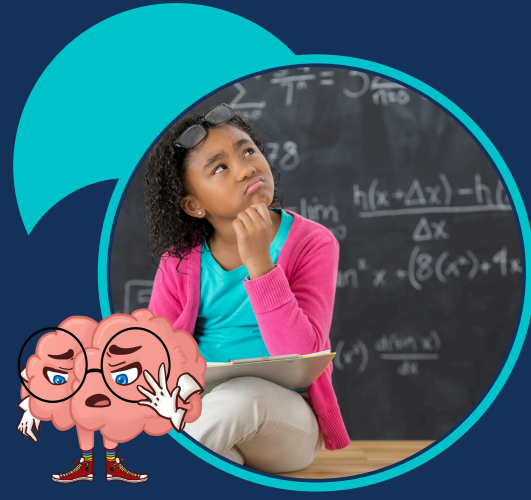
Fun environment where we use play to develop math concepts, emotional intelligence and metacognition through play therapy techniques such as puppets, board games and technology.



Unique, evidence-based content (WHARTELS™) developed by Dr Petro Erasmus an Educational Psychologist - researcher in collaboration with the North-West University.



An innovative and holistic approach using the power of play and storytelling to discover the world of mathematics.



CHILDREN DEVELOP AT DIFFERENT PACES

DIFFERENTIATION:

The Maths Whartels™ board game, together with the detailed manual, helps play facilitators in challenging situations to make mathematics accessible to all children, to not only help the child who needs extra assistance in mathematics, but also to accelerate learning for the gifted child.

COMPREHENSIVE PLAY STRATEGY:

Provide play facilitators with a comprehensive set of instructions and play equipment with clear guidelines. Play facilitators follow a step-by-step approach to introduce maths concepts to the child through play.

CURRICULUM:

The content of Maths Whartels™ is not just linked to only one curriculum. Specific curriculum outcomes based on in for example the CAPS curricula are indicated in the programme.

EMPOWERING PARENTS:

MONTHLY WEBINARS FOR PARENTS:

Feedback to parents will be more focused, as the monthly webinars will give clear guidelines and strategies for parents to help their child with mathematics at home.



This makes it easier for Play facilitators to use Maths Whartels as part of™ their Let's Really Play Maths sessions.

WITH THE ASSISTANCE OF THE REMEDIAL THERAPIST AND EDUCATIONAL PSYCHOLOGIST, THE FOLLOWING CAN BE COMPILED FOR EACH CHILD:

All reports from other professionals (Educational Psychologist, Speech and Occupational Therapists) as well as teacher's questionnaires can be sent to the Educational Psychologist and the findings and recommendations can guide the individualised play program for the child.